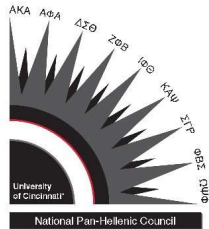


# University of Cincinnati Fraternity & Sorority Life



**Fraternity  
& Sorority Life**





# bearcats greek guide.

UNIVERSITY OF CINCINNATI

Issue II | 2020



U CINCINNATI

FRATERNITY & SORORITY LIFE

[How to Join](#) [Councils](#) [Fraternities](#) [Sororities](#) [Alumni & Advisors](#) [Policies & Resources](#) [Organizational Misconduct](#)



[Home](#) » [Campus Life](#) » [Fraternity & Sorority Life](#) » [Councils](#)

## Councils

Each of our 43 chapters are affiliated with one of our four councils. Each of our councils serve to coordinate, provide structure, and serve as advocates for to the chapters they represent, as well as hold them accountable. Each

of our councils serve to coordinate, provide structure, and serve as advocates for to the chapters they represent, as well as hold them accountable. Each

## Councils



# About Us

Fraternity & Sorority Life is a rich part of the history of the University of Cincinnati!

Our first fraternity, Beta Theta Pi, was founded in 1840. Since then, our campus has become home to over 50 national fraternities and sororities!



- More than 22,000 alumni have passed through our community. Each year, hundreds of students graduate from UC with a richer experience as a result of Fraternity & Sorority Life.
- For many, the fraternity and sorority community is their home away from home as it builds lifelong friendships and instills a sense of pride and commitment to our alma mater.
- The Five Pillars of Excellence:
  1. Intellectual Development
  2. Philanthropy & Service
  3. Social Responsibility & Citizenship
  4. Leadership Development
  5. Values Integration & Personal Growth



# Office Overview

Currently staffed by three full-time professionals:

- John Keith, Director (Interfraternity Council & National Pan-Hellenic Council)
- Shauna Prentice, Assistant Director (College Panhellenic Council)
- Madeline Stine, Program Coordinator (Multicultural Greek Council)



# Community Overview

- 3,200+ community members with 44 chapters
- Four Governing Councils:
  - College Panhellenic Council (CPC)
    - 10 chapters + 1 associate chapter
  - Interfraternity Council (IFC)
    - 24 chapters
  - National Pan-Hellenic Council (NPHC)
    - 6 chapters
  - Multicultural Greek Council (MGC)
    - 3 chapters
- Honor Societies
  - Phi Rho Chi (Fraternities)
  - Rho Lambda (Sororities)
- Greek Engagement Board (GEB)

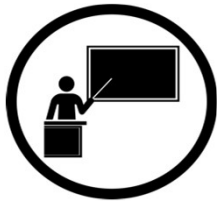




# Points of Pride Over the Last Year...



**441+** Members with **4.0** Semester GPAs & FSL GPA average above campus average



**188+** Educational & Developmental Programs/Events



**\$263,452+** Raised for Philanthropies

**70+** Local, National & International Organizations Served



**67,745+** Hours of Community Service



# Benefits and Expectations of Fraternity & Sorority Life



Benefits of Fraternity & Sorority Life include:

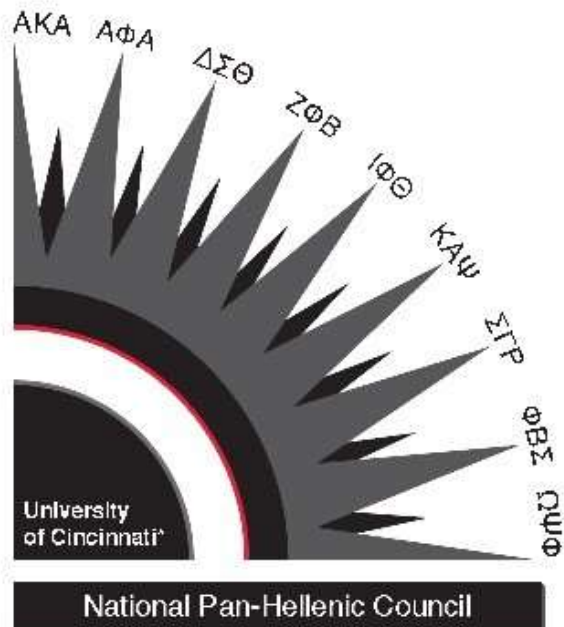
- Home away from home
- Opportunities for personal development and leadership
- Lifetime membership and friendship
- Academic support

Membership in Fraternity & Sorority Life comes with certain expectations:

- Attend weekly meetings to learn more about the history and values of your organization
- Participation in leadership, social, and service opportunities
- Work with alumni and advisors, which are great networking opportunities!

However, these expectations are made clear up-front, giving you an opportunity to plan and manage time effectively!





# Fraternity & Sorority Life



# National Pan-Hellenic Council (NPHC)

NPHC is the coordinating body for the 9 historically African-American fraternities and sororities. At UC, these include the following organizations:

- Alpha Kappa Alpha Sorority, Inc.
- Alpha Phi Alpha Fraternity, Inc.
- Delta Sigma Theta Sorority, Inc.
- Omega Psi Phi Fraternity, Inc.
- Sigma Gamma Rho Sorority, Inc.
- Zeta Phi Beta Sorority, Inc.





# NPHC Membership Intake Process (MIP)

## The New Member Process:

NPHC organizations recruit members through a process called **membership intake**.

- Fraternities and sororities will individually announce their intake processes and explain it at their initial informational meeting
- After this meeting, potential new members or aspirants are asked to complete a membership application to show that they have achieved the organizations minimum standards for membership (ex. academics, community service, and leadership).
- Following the submission of an application, interviews and selections will take place.
- Member initiation is referred to as “crossing” and members participate in some sort of “presentation” or “probate” in which they are unveiled to the rest of the community



# NPHC Membership Intake Process (MIP)

## MIP Requirements:

- 12-36 cumulative hours (12 here at UC)
- Be a full-time student
- Have at least a 2.5 cumulative GPA
- Completed at least 30hrs of community service

*\*Interested in learning more? Please be sure to attend:  
Declassified on August 26, 2020 @ 5PM in TUC Great Hall\**







**Fraternity  
& Sorority Life**



# Multicultural Greek Council (MGC)

MGC is the governing body for the 3 Multicultural Greek Organizations (MGOs) at UC. These include the following organizations:

- Chi Sigma Tau Fraternity, Inc.
- Delta Phi Lambda Sorority, Inc.
- Kappa Phi Lambda Sorority, Inc.



# MGC Membership Intake Process (MIP)

## The New Member Process:

MGOs recruit members through a process called **membership intake**.

- There is no formal process to register for intake and each organization coordinates their own process and holds events separately, typically within the first few weeks of each semester
- General requirements include being a full-time undergraduate students, a 2.3 GPA (sometimes higher depending on the chapter) and to be in good standing with the university
- After intake, there is a period of education which can vary depending on MGO. Following this education, in some MGOs, member initiation is referred to as “crossing” and members participate in some sort of “reveal” or “presentation” in which they are recognized and unveiled to the rest of the community



## Tips on Expressing Interest

- Don't disrespect members of any organization!
- If you have questions, ask a member of THAT organization!
- Don't try to mimic the organizations hand signs or calls – it comes off as disrespectful!
- Don't stereotype organizations by what you hear! Get to know the organizations and their members for yourself before making a decision!





**Fraternity  
& Sorority Life**





# Interfraternity Council (IFC)

IFC is the governing body for 24 men's fraternities. At UC, these include the following organizations:

- Alpha Chi Rho
- Alpha Epsilon Pi
- Alpha Sigma Phi
- Alpha Tau Omega
- Beta Theta Pi
- Delta Sigma Phi
- Delta Tau Delta
- Kappa Sigma
- Lambda Chi Alpha
- Phi Delta Theta
- Phi Gamma Delta (FIJI)
- Phi Kappa Tau
- Phi Kappa Theta
- Phi Sigma Kappa
- Pi Kappa Alpha
- Pi Kappa Phi
- Pi Lambda Phi
- Sigma Alpha Epsilon
- Sigma Chi
- Sigma Phi Epsilon
- Sigma Tau Gamma
- Tau Kappa Epsilon
- Theta Chi
- Triangle





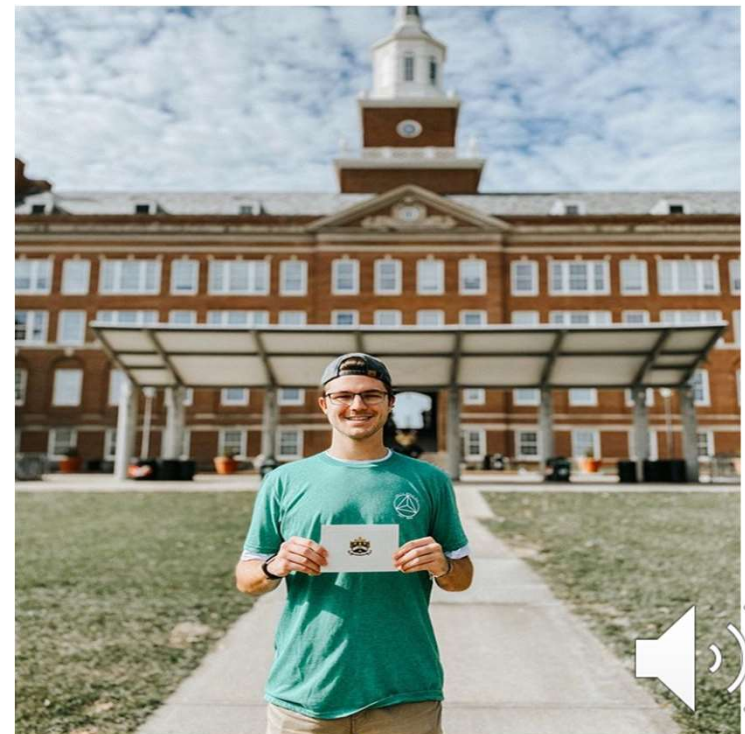
# Interfraternity Council Recruitment Process

## The Recruitment Process:

IFC Fraternities participate in an open recruitment week each semester that is coordinated by IFC

- Throughout this week, chapters will host individual events in order to facilitate the process of getting to know active/potential new members better
- Fall: **September 18, 2020-September 27, 2020**
- Registration for Fall Recruitment opens **May 15, 2020**  
– visit the IFC Instagram for the link (@cincylfC)

Please contact IFC VP of Recruitment, Jon Ashbrook ([recruitment@ucifc.com](mailto:recruitment@ucifc.com)), with any questions!





**Fraternity  
& Sorority Life**



# College Panhellenic Council (CPC)

CPC is the governing body of 10 chapters and 1 associate chapter. At UC, these include the following sororities:

- Chi Omega
- Delta Delta Delta
- Gamma Phi Beta
- Kappa Alpha Theta
- Kappa Delta
- Kappa Kappa Gamma
- Phi Mu
- Phi Sigma Rho (associate chapter)
- Pi Beta Phi
- Theta Phi Alpha
- Zeta Tau Alpha



# Phi Sigma Rho Recruitment Process

Phi Sigma Rho is a social sorority for women in engineering and engineering technology and an associate member of our College Panhellenic Council.

Phi Sigma Rho holds their own “informal” recruitment shortly after classes begin, typically around the first weekend of CPC Formal Recruitment.

- This process is meant to be less intense compared to formal recruitment and is more accessible to women in engineering and STEM!
- They hold three events: Info Night, Philanthropy Night, and Sisterhood Night
- After these, they invite women to participate in interviews before being selected for membership!
- As a celebration, Phi Sigma Rho participates in the normal Bid Day with the rest of CPC





# CPC Formal Recruitment Process

## The Recruitment Process:

Formal Recruitment typically occurs across two weekends (**September 11-13, 2020 & September 18-20, 2020**). Potential New Members (PNMs) are **required to register** for this process!

- Priority Registration OPENS on **MAY 4 , 2020 (\$45)**
- Regular Registration OPENS on **July 1, 2020 (\$55)**
- Late Registration is **AUGUST 14, 2020-SEPTEMBER 4, 2020 (\$65)**

This fee helps to assist in the management, promotion, coordination, and implementation of the Formal Recruitment experience! It also helps to cover any t-shirts/meals provided to PNMS.



To register for Fall 2020 Formal Recruitment, use the QR code or click [here!](#)

# CPC Formal Recruitment Process

## The Recruitment Process:

After registering, PNMs will be assigned to a Rho Gamma (Recruitment Counselor) group.

- Rho Gammas assist in explaining the recruitment process, answer questions, and deal with any issues that arise. PNMs will meet with their Rho Gamma groups daily to review activities and receive additional information!

*Informal Recruitment (COB) takes place in the Spring semester, however, chapter participation is not guaranteed!*





## CPC Recruitment Membership Selection

Membership Selection refers to the process by which sororities choose PNMs during recruitment.

- At the end of each round, PNMs will prioritize the chapters who parties they have attended based on their interest. At the same time, chapters are also submitting their selection of PNMs to invite back.
- PNMs may ONLY rank chapters they have attended parties for during that round. However, this priority ranking does not guarantee that an PNM will be invited back.
- Prior to the next round, PNMs will be given their schedule of parties that they have been invited back to attend.



# CPC Recruitment Rounds

## Round One: Open House (**September 11, 2020**)

- PNMs will be provided with a t-shirt and name tag by CPC. They should plan to wear jeans or casual bottoms!

## Round One: Open House (**September 12, 2020**)

- PNMs will be provided with a t-shirt and name tag by CPC. They should plan to wear jeans or casual bottoms!

## Round Two: Philanthropy (**September 13, 2020**)

- PNMs will be provided with name tag by CPC. They should plan to dress business casual!

## Round Three: Sisterhood (**September 18, 2020**)

- PNMs should plan to dress business casual!

## Round Four: Preference (**September 19, 2020**)

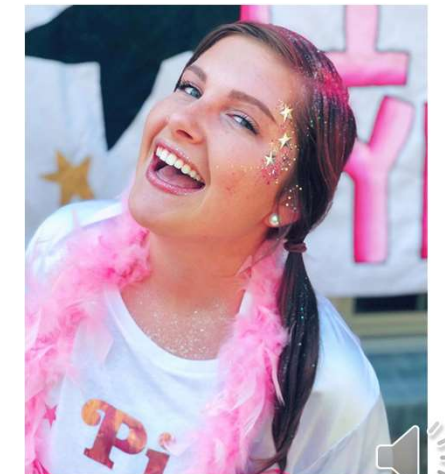
- PNMs should wear cocktail/semi-formal attire!

## Bid Day (**September 20, 2020**)

- PNMs should wear casual bottoms and a plain t-shirt or tank top!



Please contact CPC VP of Recruitment, Caiti  
([recruitment@ucgpanhellenic.com](mailto:recruitment@ucgpanhellenic.com)),  
with any questions!





# College Panhellenic Council Recruitment Rules

Recruitment rules can be found on the CPC website: [www.ucpanhellenic.com](http://www.ucpanhellenic.com)

Things to Remember:

- When in doubt, talk to your Rho Gamma or a member of the College Panhellenic Council exec...they are here to help!
- It is an exhausting weekend, use your free time wisely and make sure you get a good night's sleep!
- Keep an OPEN MIND! These two weekends will fly by, so have a positive attitude and form your own opinions!



# Grades & Recruitment

Grades at the University of Cincinnati are VERY important! Specifically, Greek women have a higher average GPA than the undergraduate women's average GPA

- The All Women's GPA was a 3.0 while the All Sorority GPA was a 3.2 last fall!

For freshman students, your high school GPA is taken into account by sororities during recruitment. Most require at least a 3.0, however, in some rare instances, exceptions are made.

Panhellenic will use your core class GPA as calculated by UC Admissions when finalizing your registration in order to make things fair to all PNMs!

- For example, you might have a 3.5 from your high school, but your core UC GPA might be a 3.32
- We will send BOTH grades to each sorority so that they have all of this information!



## Connections

Hanging out with current sorority members over the summer can lead to being drawn only to one certain sorority – the potential for this ending in disaster is tremendous!

Here's why:

- In doing so, you will feel a special connection. However, while these women can be your friends, they cannot promise or guarantee membership into their sorority. As such, you must be careful that this does not lead to false hope!

Remember: KEEP AN OPEN MIND! Membership decisions require an entire chapter, not 1, 3, or even 5 women.





# Important 2020 FSL Events



## Fraternity & Sorority Community

Meet the Chapters:

- **August 20, 2019 (Time and Location TBD)**

Parent Convocation:

- **August 21, 2019**
- Not mandatory, however, it is a great opportunity for parents to learn about the process of fraternity recruitment/intake and the rest of the Fraternity & Sorority Life community at UC!

## National Pan-Hellenic Council (NPHC)

Declassified:

- **August 26, 2020 @ 5PM (TUC 465 Great Hall)**
- All students interested in being considered for membership intake in one of the active NPHC organizations are encouraged to attend as a prerequisite to participating in membership intake programs!

## Multicultural Greek Council (MGC)

Meet the Greeks:

- **August 26, 2020 (Time and Location TBD)**
- All students interested in being considered for membership intake in one of the active MGC organizations are encouraged to attend!

## Interfraternity Council (IFC)

Recruitment:

- **September 14, 2020-September 27, 2020**

## College Panhellenic Council (CPC)

Recruitment Registration Dates:

- Priority Registration OPENS **May 4, 2020**
- Regular Registration OPENS **July 1, 2020**
- Late Registration is **August 14-September 4, 2020**

Potential New Member (PNM) Convocation:

- **September 10, 2020 from @ 5:30PM in Zimmer 400**
- This is prior to the first day of formal recruitment. Please come dressed casually!

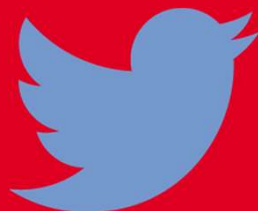
Formal Recruitment:

- **September 11-13, 2020 & September 18-20, 2020 (Stratford Heights)**





# Follow Us On Social Media!



## University of Cincinnati Fraternity & Sorority Life

- Instagram/Twitter: U of Cincinnati FSL (@uc\_fsl)

## National Pan-Hellenic Council (NPHC)

- Instagram: UC NPHC (@uc\_nphc)

## Multicultural Greek Council (MGC)

- Instagram/Twitter: Cincy MGC (@cincy\_mgc)

## Interfraternity Council (IFC)

- Instagram: University of Cincinnati IFC (@cincyifc)
- Twitter: UC IFC (@UCIFC)

## College Panhellenic Council (CPC)

- Instagram/Twitter: College Panhellenic Council (@uc\_cpc)



Questions?  
Contact [greeklife@uc.edu](mailto:greeklife@uc.edu)

